

Part funded by



Smart wellbeing inspired by the community



European Union

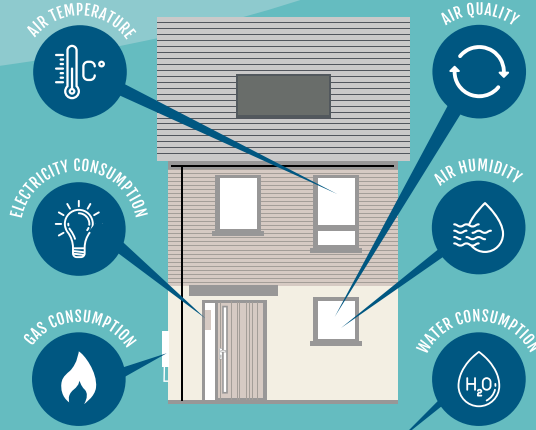
European Regional Development Fund

Using home sensors and tablet computers Smartline is creating a digitally **connected community** amongst **300** households within Camborne, Pool, Redruth and Illogan.

Enterprises

Smartline is working with Cornish enterprises to **develop** the next generation of smart technology to **improve wellbeing** in the homes of the future, based on the **needs** of the households and the data collected from Smartline participants.

Community



Research

Smartline **brings together** an interdisciplinary team of epidemiologists, economists, geographers, mathematicians and sociologists **exploring** the potential for business **innovation** to **improve health and wellbeing**.

- VOLUNTEER CORNWALL
- CORNWALL COUNCIL
- UNIVERSITY OF EXETER
- COASTLINE HOUSING

The Smartline story

Buzz Interactive – Developing an innovative clinically useful tool

The University of Exeter has been collaborating with Cornish technology company, Buzz Interactive, on the Ménière's Monitor (www.menieresmonitor.com); a mobile phone application developed in 2013. The Ménière's Monitor allows users to collect information about their disease, helping them to manage their own condition as well as providing vital research data.

To date the app has proved to be extremely useful to participants, clinicians and researchers alike. Using data from the app, researchers at the University of Exeter have provided robust evidence for a correlation with a) the weather and b) stress in frequency of debilitating attacks. The app has also benefited participants, allowing them to monitor and identify individual triggers.

For Buzz Interactive, this collaboration has led to the company expanding into new markets and building a track record to help attract new business.

The In Residence Scheme through the Smartline project has facilitated further exploration into how the Meniere's Monitor could be taken to the next level; providing additional functionality for users and importantly exploring the adaptations required to develop an innovative clinically useful tool.



Buzz Interactive have successfully applied for funding for a Follow-on Research Project which means they are now developing the Ménière's Monitor into a tool that can be widely utilised to improve self-management, clinical interactions and overall understanding of Meniere's. The team at Buzz Interactive are working together with the researchers, clinicians and patients on proposed amendments to significantly enhance the Meniere's Monitor.

"Our involvement with Smartline, has definitely helped Buzz progress in the eHealth sector over the past couple of years. This has been two-fold; obviously we have been fortunate enough to create the Ménière's Monitor app, which makes full use of our in-house app development expertise and given us a product that we know has been well received by end users. In addition to this, Buzz has benefitted from working side by side with academics and clinicians to hone the app to fully meet medical needs too. This is an extra layer of insight that we don't always get to experience with our clients and one of the reasons that the collaboration with Smartline works so well for Buzz." Lindsey Axten, Project Director, Buzz Interactive

Visit our website www.smartline.org.uk for more information and details on how to apply

